

Chippewa Valley Schools



Return to School

2021 - 2022

Inspiring and empowering learners to achieve a lifetime of success



Chippewa Valley Schools Return to School 2021-2022

The district's primary goal is to keep students and staff safe by implementing appropriate safety measures and meeting the standards of the state and local health department.

The Chippewa Valley Schools' Board of Education welcomes students for in-person learning for the Fall of 2021. An intermittent shift to remote learning can occur at any time if the Board of Education determines that the in-person learning environment is not safe for students and staff.

No matter the learning scenario, Chippewa Valley will continue to implement layers of health and safety protocols and create an environment where students can learn, teachers can teach, staff can work, families have options, and all stakeholders feel safe and supported.

We thank you for your continued support.

Inspiring and empowering learners to achieve a lifetime of success



Chippewa Valley Schools

Health and Safety Procedures

2021-2022

Staff Responsibilities

- Understand signs and symptoms of COVID-19
- Prior to the school day, self-screen and stay home if sick or have signs or symptoms of COVID-19
- To the best of one's ability, inform District nurse and Human Resources of medical concerns
- Consider CVS recommendation to wear facial coverings
- Maintain appropriate spacing in the teacher's lounge, workrooms, hallways, and classrooms
- Inform administration and District nurse of any contact with a symptomatic person
- Exit the building two hours after dismissal to allow for cleaning protocols
- If additional time is needed in the building, administration must approve. The decision will be limited to school/district sponsored clubs.
- School sponsored clubs and events must meet state requirements for group size
- Maintain appropriate space between self and students while providing instruction
- Encourage students to maintain appropriate spacing
- Wear and make ID badges visible

Student Responsibilities

- Understand signs and symptoms of COVID-19
- Prior to the school day, conduct daily health screener and stay home if sick or have signs or symptoms of COVID-19
- To the best of one's ability, share medical concerns with the building health aide or staff
- Consider CVS recommendation to wear facial coverings in school.
- Wear facial coverings when riding on school buses
- Follow building protocols for entry and exit of the building.
- Arrive to school at the scheduled time. Do not congregate inside or outside the school before school begins.
- Exit the building within 15 minutes of the school day unless enrolled in a club
- Do not congregate in hallways and go directly from class to class
- (Grades 6-12) Carry and make ID badges available upon request



Chippewa Valley Schools

Health and Safety Procedures

2021-2022

Arrival and Dismissal Procedures

- It is recommended that staff and students wear a facial covering
- Buildings will establish arrival and dismissal procedures to limit crowding. This may include the use of multiple doors for entry as well as exit
- Each school will communicate details regarding arrival and dismissal specific to the building
- Students who are not using district transportation should arrive to school at the scheduled time
- Students and families should not congregate inside or outside the building before or after school
- Students must exit the school building within 15 minutes of the end of the school day unless enrolled in an afterschool district sponsored club
- Hallways will be designated as one-way traffic when possible or divided as two-way traffic to ensure efficiency and appropriate spacing between students and staff
- Hallway traffic patterns will be established to reduce crowding throughout the school day

Athletics

- CVS will comply with Michigan High School Athletic Association (MHSAA) guidelines
- Student athletes must sign a waiver to participate in organized sports' activities, acknowledging the risks associated with athletics and COVID-19
- All sport teams will follow sport-specific protocols related to distancing, sanitization, and cleanliness
- Students, teachers, and staff should wash hands before and after every practice or game
- Facial coverings are required on buses
- Teams and coaching staff will communicate with the local health department for guidance in situations regarding the health and safety of our players and coaches
- Indoor and outdoor events will follow MHSAA guidelines for social distancing and number of spectators

Building Procedures and School Offices

- Physical distancing between employees
- Limited furniture to reduce items that need to be cleaned
- Hand sanitizer and facial coverings will be available to staff, students, and approved visitors
- Approved visitors will be reminded to self-screen before entering buildings
- Maintain a detailed record of all visitors to the building
- Plexiglass available for clerical desks
- Regular cleaning of office spaces
- Maintenance employees must follow the approved visitor protocols



Chippewa Valley Schools

Health and Safety Procedures

2021-2022

- Virtual meetings may be considered for IEPs, 504s, parent teacher conferences and school events such as curriculum night
- Guests are limited. When necessary, guests are asked to use the main door and camera system to show identification and state a specific need. The office staff will limit entry into the school building, when possible, by using the exterior video and sound system to its fullest extent.

Building Safety

- When open, building doors for entry or exit of the building should be monitored by a staff member, and will be locked

Cafeterias and Lunch

- When necessary, schools will utilize additional building space and the cafeteria to accommodate lunch
- When the weather permits, students may eat outside if adult supervision is available
- Students will have assigned seats and elementary students will remain with their classroom peers during lunch
- Students will be spaced out as much as possible to support social distancing



Classrooms

- Within the given space, physical distancing will take place
- Teachers will be encouraged to maintain-appropriate social distancing from students
- Excess furniture will be removed
- Cleaning products and hand sanitizer will be provided
- High-touch areas such as desks will be cleaned
- Students will be encouraged to use their own materials, rather than sharing, when possible
- Physical education classes may take place outside when appropriate and if the weather permits

Cleaning Routines and Good Hygiene

- High-touch surfaces will be cleaned
- School buildings will be thoroughly cleaned each night
- Cafeteria tables will be cleaned and sanitized between lunch periods



Chippewa Valley Schools Health and Safety Procedures

2021-2022

Community Events and After School Groups

- Limited Chippewa Valley groups will have access to the school buildings after school

Computer Labs

- Computer labs or laptops will be used when available
- Electronic devices will be cleaned after they are used

Cubbies/Lockers

- Each school building will determine the best ways for students to travel with their belongings throughout the building
- Cubbies and lockers will be utilized when deemed necessary

District Provided Transportation

- It is recommended that students and staff use hand sanitizer upon entering the school bus
- It is required that staff and students wear a facial covering while on buses
- Siblings will be encouraged to sit together on the bus
- Students may be assigned seats
- Students will be dismissed from bus by rows
- The school bus seats and touch points will be disinfected multiple times each day
- Windows will be opened when cleaning occurs
- Windows on buses may be open during transport if the weather permits

Facial Coverings

- Facial coverings are recommended for all staff and students
- If a facial covering is not disposable, it should be washed daily
- The district will make facial coverings available for staff and students that do not have one and wish to wear one
- Facial coverings are required on school buses

Fieldtrips

- Virtual fieldtrips will be encouraged

Hallways

- Hallways will be designated as one-way traffic when possible or divided as two-way traffic to ensure efficiency and appropriate spacing between students and staff



Chippewa Valley Schools Health and Safety Procedures

2021-2022

Health Clinics and Protocols

- Clinics have a designated and separate space in each building
- Students in the space are monitored by the building health aide or office staff
- Safety equipment is available to accommodate a student or staff member that may experience COVID-19 like symptoms
- Regular cleaning of the clinic to minimize virus spread
- A student or staff member that is febrile (100.4 or greater) or has other COVID-19 like symptoms must stay in a designated separate space and leave the building as soon as possible. This space will be monitored by a staff member. Macomb County Health Department guidelines will be followed for return to school or work.
- Any student or staff member who either exhibits COVID-19 symptoms or has a temperature of 100.4 degrees Fahrenheit or higher while at school or any school activity should be sent home and follow the Macomb County Health Department guidelines for return to school or work.
- The clinic is reserved for medication administration, diabetes management and medical procedures such as tube feedings



Health Screening

- Students/families are asked to self-screen each day before school, using the Chippewa Valley Student Self-Screening Questions found in this document
- Staff and students must stay home if feeling ill or have symptoms that are COVID-19 related
- Approved guests are expected to self-screen before entry to the building

Media Centers

- Appropriate social distancing will be encouraged
- Students are permitted to check out books and utilize the media center

Music and Band Classes

- Students will sit in the same direction, facing forward, when possible
- Class may be held outdoors, when appropriate
- Wind instruments in secondary classes will be equipped with bell covers
- Overlapping masks will be available in band classes
- Rehearsal time will be limited to 50 minutes
- Additional parameters may be implemented, based on the latest health information



Chippewa Valley Schools Health and Safety Procedures

2021-2022

Recess/Playgrounds

- Students will wash their hands or use hand sanitizer before and after recess
- Recess times will be scheduled

Restrooms

- Restrooms will be cleaned regularly
- Restrooms will be monitored to prevent overcrowding
- Students will use the restroom when needed but a schedule may be created to limit the number of students in a community restroom at one time
- Good hygiene practices will be taught and reinforced
- Informational signs will be posted to encourage proper handwashing

School Aged Childcare (SACC)

- Only available for students on the days school is in session
- If fully staffed, available to students in grades K-5, before and after school
- Building health and safety protocols will be followed as well as licensing requirements by the State of Michigan.
- Students/families are asked to self-screen each day before SACC, using the Chippewa Valley Student Self-Screening Questions
- It will be recommended that students attending SACC wear facial coverings and socially distance

Shuttle Bus Between High Schools for Students

- It is required that students wear face coverings on the bus
- It is recommended that students use hand sanitizer upon entering the school bus
- Students will sit in assigned seats and siblings will be encouraged to sit together
- As appropriate regarding weather, windows will be opened during transport
- The school bus seats, and touch points will be disinfected multiple times each day
- Students will be dismissed from the bus by rows

Sick Students/Staff or Suspected Cases of COVID-19

- Chippewa Valley Schools will follow the Macomb County Health Department guidelines if a confirmed case of COVID-19 is identified
- CVS will follow the Macomb County Health Department Guidelines when dealing with suspected cases of COVID-19 in school
- If a case is confirmed, the school will notify staff and families
- Quarantine and contact tracing requirements will be determined by the local health department
- The Macomb County Health Department will work with schools to determine a need for closure



Chippewa Valley Schools Health and Safety Procedures 2021-2022

Snacks

- Students will be permitted to have snacks in the classroom
- If building guidelines allow birthday or classroom treats, they must be individually packaged
- Proper distancing and hygiene practices will be encouraged

Social Emotional Support

- Social emotional support will be available to all students
- School staff will work to implement appropriate supports to assist students and staff

Spacing

- Students, teachers, staff members and desks/tables will be spaced as far apart as possible

Special Education

- IEP meetings may be held virtually or in person. In person meetings will require that all participants follow district protocols, self-screen, and maintain appropriate distances
- Students' health plans and 504s will be reviewed for needed adjustments.
- Students' IEP or IEP amendment meetings will be held in collaboration with parents to address needs and to revise Contingency Learning Plans.
- Staff, if requested, will be provided with facial coverings that have a clear window to assist with students with various learning needs.



Early Childhood Special Education (ECSE) and Creative Learning Program (CLP)

- Facial coverings are recommended for all staff and students
- Follow building safety protocols
- Within the given space, physical distancing will take place
- Items with soft touch surfaces that cannot be cleaned will be removed
- Cleaning products and hand sanitizer will be provided
- Safety precautions will be in place to ensure the safety and health of staff and students
- High touch areas such as desktops will be cleaned
- To the extent possible, service providers such as speech pathologists, occupational therapists and physical therapists will travel to the classroom
- Staff, students, and parents/guardians will follow building safety protocols
- Classroom volunteers or guests may be limited

Great Start Readiness Program (GSRP)

- Facial coverings are recommended for all staff and students
- Follow building safety protocols
- Within the given space, physical distancing will take place
- Excess furniture will be removed
- Soft touch surfaces that cannot be cleaned will be removed
- Cleaning products and hand sanitizer will be provided
- Safety precautions will be in place to ensure the safety and health of staff and students
- High touch areas such as desks will be cleaned
- To the extent possible, service providers such as speech pathologists, occupational therapists and physical therapists will travel to the classroom
- Staff, students, and parents/guardians will follow buildings safety protocols
- Classroom volunteers or guests may be limited

Little Turtle Childcare and Preschool

- Facial coverings are recommended for all staff and students
- Follow building safety protocols
- Within the given space, physical distancing will take place
- Excess furniture will be removed
- Soft touch surfaces that cannot be cleaned will be removed
- Cleaning products and hand sanitizer will be provided
- Safety precautions will be in place to ensure the safety and health of staff and students
- High touch areas such as desks will be cleaned
- To the extent possible, service providers such as speech pathologists, occupational therapists and physical therapists will travel to the classroom
- Staff, students, and parents/guardians will follow buildings safety protocols
- Classroom volunteers or guests may be limited



Chippewa Valley Schools

Student Self-Screening Questions

2021-2022

The following screener has been created with the support of the Macomb County Health Department and will be used by Chippewa Valley Schools. Parents/guardians are expected to screen their child(ren) **before leaving for school or sending them to school**. These symptoms may indicate a possible illness that may decrease your child's ability to learn and put them at risk for spreading illness to others.



Symptom Questions

Section 1:

In the last 24 hours, has your child developed any of the following symptoms that are new/different/worse from baseline of any chronic illness:

- | | | |
|---|--|--|
| <input type="checkbox"/> Cough | <input type="checkbox"/> New loss of smell | <input type="checkbox"/> Shortness of breath |
| <input type="checkbox"/> Difficulty breathing | <input type="checkbox"/> New loss of taste | |

Section 2:

In the last 24 hours, has your child developed any of the following symptoms that are new/different/worse from baseline of any chronic illness:

- | | |
|---|---|
| <input type="checkbox"/> Chills or rigors (severe chills with shivering) | <input type="checkbox"/> Runny nose or congestion |
| <input type="checkbox"/> Diarrhea | <input type="checkbox"/> Headache |
| <input type="checkbox"/> Fatigue | <input type="checkbox"/> Sore throat |
| <input type="checkbox"/> Felt feverish or measured temperature of 100.4 F or higher | <input type="checkbox"/> Muscle Aches |
| | <input type="checkbox"/> Vomiting |
| | <input type="checkbox"/> Nausea |

STOP **If the answer is YES to any of the symptom questions listed in Section 1 or YES to two or more of the symptoms listed in Section 2, please do not send your child(ren) to school. Self-isolate at home and contact your healthcare provider for direction and possible testing for COVID-19.**

If both sections above have been answered NO, please continue reading Section 3 for next steps.

Section 3: Close Contact Question

In the past 14 days has your child(ren):

- Had close contact with an individual who has tested positive with COVID-19?

STOP **If the answer is YES to the Close Contact Question, please do not send your child to school.** Self-quarantine at home for 10 days. Quarantine is not necessary for students diagnosed with COVID-19 in the past 3 months, for students who are fully vaccinated against COVID-19, or for students exposed only in the classroom, while both the index case and close contact were masked and sitting at least 3 feet apart. Contact your healthcare provider if your child has symptoms.

If your child(ren) will not attend school, call the school as soon as possible to let them know the reason your child(ren) will not be there today. The school can guide you with next steps regarding your child's health and ability to return to school.

DISCLAIMER: This screening tool is subject to change based on the latest information on COVID-19.



Please call the District COVID Nurse at 586-723-2188 if a student or staff member has an exposure to a positive COVID person, a positive COVID test, or symptoms related to COVID.

1. Exposure to a Positive COVID Person

- A person in the household has tested positive for COVID.
 - The student or staff member will need to quarantine for 10 days, which starts from their last day of close contact to the positive person. If they cannot be isolated, their quarantine will start after the isolation period of the positive person.
- The student or staff member was with a friend or family member that tested positive for COVID 48 hours before their onset of symptoms.
 - The student or staff member will need to quarantine for 10 days, which starts from their last day of close contact to the positive person.

2. Symptoms of COVID-19

- Symptoms may include:

Cough
 Difficulty breathing

New loss of smell
 New loss of taste

Shortness of breath

OR two or more of the following

Chills or rigors (severe chills with shivering)
 Diarrhea
 Fatigue
 Felt feverish or measured temperature of 100.4 F or higher

Headache
 Muscle Aches

Nausea
 Runny nose or congestion
 Sore throat
 Vomiting

- A pending COVID result for the student or staff member.

DISCLAIMER: This information is subject to change based on the latest information on COVID-19.



Macomb County Health Department

Students and Staff Persons with Symptoms of COVID-19 or Who Have Tested Positive for COVID-19

Students and Staff Persons with Symptoms of COVID-19

- Symptoms of COVID-19 in students and staff persons include the following. These symptoms should be new or different/worse than baseline for any existing chronic illness.

Any one of the following:

- | | | |
|---|--|--|
| <input type="checkbox"/> Cough | <input type="checkbox"/> Shortness of breath | <input type="checkbox"/> New loss of taste |
| <input type="checkbox"/> Difficulty breathing | <input type="checkbox"/> New loss of smell | |

OR



Health
Department

Two or more of the following:

- | | |
|--|--------------------------------------|
| <input type="checkbox"/> Chills or rigors (shaking or exaggerated shivering) | <input type="checkbox"/> Headache |
| <input type="checkbox"/> Congestion or runny nose | <input type="checkbox"/> Nausea |
| <input type="checkbox"/> Diarrhea | <input type="checkbox"/> Sore Throat |
| <input type="checkbox"/> Fatigue | <input type="checkbox"/> Vomiting |
| <input type="checkbox"/> Feeling feverish or measured temperature of 100.4 degrees F or higher | |
| <input type="checkbox"/> Muscle aches without another explanation | |

- A student or staff person who exhibits COVID-19 symptoms as defined above should not go to school or any school activity. If at school or any school activity, they should be sent home. These individuals should be evaluated by a healthcare provider and tested for COVID-19 with a diagnostic test (nose/throat swab).
- If at school or any school activity, the student/staff person should wear a face covering and wait in an isolation area away from other staff and students until they leave the school building.
- Students and staff persons with symptoms (previously described) and who have had close contact with a person who has tested positive for COVID-19 are considered probable cases of COVID-19.

Confirmed and Probable Cases of COVID-19

- A person who has tested positive for COVID-19 is a confirmed case of COVID-19 if the positive test was a polymerase chain reaction (PCR) test and a probable case of COVID-19 if the positive test was an antigen test. A person with symptoms (previously described) and who has had close contact with a person who has tested positive for COVID-19 (PCR test or antigen test) is considered a probable case of COVID-19.
- School administration must report any student or staff person with confirmed or probable COVID-19 to the Macomb County Health Department (see Return to School Toolkit, Appendix C, COVID-19 Report Form).

- School administration must notify school staff and student families on the school’s website when a student or staff person with confirmed or probable COVID-19 has been identified in a school maintaining the confidentiality of the student or staff person as required by state and federal laws. School administration may also choose to provide written notification to staff and student families.

Close Contacts of Persons with Confirmed or Probable COVID-19

- The Macomb County Health Department will work with the school to identify close contacts of the student or staff person with confirmed or probable COVID-19 (see Return to School Toolkit, Appendix D, Contact Tracing Form).
- A close contact is someone who has been within 6 feet of the student or staff person with confirmed or probable COVID-19 for a cumulative total of 15 minutes or more over a 24-hour period starting from 2 days before illness onset (or, for asymptomatic persons, 2 days prior to test specimen collection). The determination of close contact should be made irrespective of the use of face coverings.
- Close contacts should be notified and instructed to remain quarantined at home for 10 days after the last contact with the student or staff person (see document for situations where quarantine is not necessary). Day zero (0) is the day of last contact and the quarantine period ends at midnight on day 10.
- The quarantine period for household contacts is 10 days after the date the person with confirmed or probable COVID-19 completes the isolation period if ongoing close household contact cannot be avoided. If ongoing close household contact can be avoided, the quarantine period is 10 days after the date close household contact ended.
- The quarantine period may be reduced to 7 days if the contact receives a negative viral (PCR or antigen) test performed at least 5 days after exposure.
- Quarantine is not necessary for the following persons:
 - Students exposed only in the classroom, while both the index case and close contact were masked and sitting at least 3 feet apart.
 - Students or staff persons who have tested positive for COVID-19 in the past 3 months do not need to quarantine.
 - Students or staff persons who have been fully vaccinated against COVID-19 do not need to quarantine. Fully vaccinated is defined as 2 weeks or more following receipt of the second dose using a 2-dose series or receipt of one dose using a single dose vaccine.
 - Students or staff persons who are contacts of a contact do not need to quarantine for 10 days. Contacts of a contact are persons who have not had direct contact with a person with confirmed or probable COVID-19 but instead have had close contact with someone who has had direct contact with a person with confirmed or probable COVID-19.
- Students or staff persons who are close contacts and who test positive for COVID-19 must be reported to the Macomb County Health Department and managed as previously outlined.

Returning to School or Work

- Students and staff persons with symptoms who test positive for COVID-19 or who are a probable case of COVID-19 may return to school/work if:

- At least 10 days have passed since symptom onset and
- At least 24 hours have passed since resolution of fever without the use of fever-reducing medications

and

- Other symptoms have improved

- Students and staff persons who never had symptoms but who test positive for COVID-19 may return to school/work if at least 10 days have passed since the date of their first positive COVID-19 test (provided no symptoms appeared during the 10-day period).

- Day zero (0) is the day of symptom onset or the day the positive test specimen was collected (if there were no symptoms). The isolation period ends at midnight on the last day of the isolation period. The last day of isolation is usually day 10 but may be a later day if symptoms have not improved or fever has not resolved for at least 24 hours without the use of fever-reducing medication.

- Students and staff persons with symptoms (previously described) who test negative for COVID-19 (with a PCR test) and who have had no close contact with a person who has tested positive for COVID-19 may return to work 24 hours after resolution of fever and improvement of symptoms.

- Students and staff persons with symptoms (previously described) who were not tested for COVID-19 and who have had no close contact with a person who has tested positive for COVID-19 may return to work 24 hours after resolution of fever and improvement of symptoms if they present a note from a healthcare provider that provides an alternative explanation for the symptoms. If a healthcare provider note is not available, the staff person may return to work if:

- At least 10 days have passed since symptom onset and
- At least 24 hours have passed since resolution of fever without the use of fever-reducing medications

and

- Other symptoms have improved

- Students and staff persons who have traveled (domestic or international) should follow current Centers for Disease Control and Prevention (CDC) recommendations. People who have been fully vaccinated do not need to quarantine after returning from domestic or international travel.

DISCLAIMER: This information is subject to change based on the latest information on COVID-19.

Who Might be a Contact?



Classmates

Classmates within 6 feet* of someone with COVID-19, either in the classroom or on the bus, for a total of 15 minutes or more over a 24-hour period.



Lunchmates

Lunch mates of person with COVID-19 if sitting within 6 feet* for a total of 15 minutes or more over a 24-hour period. This is a higher risk time as face coverings cannot be worn.



Playmates

Playmates on the playground or in gym within 6 feet* of someone with COVID-19 for a total of 15 minutes or more over a 24-hour period.



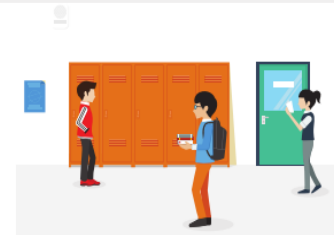
Teammates

Sports teammates within 6 feet* of someone with COVID-19 for a total of 15 minutes or more over a 24-hour period.



Opposing Teammates

Opposing teammates in sporting events who shared time on the field or court and were within 6 feet* of someone with COVID-19 for a total of 15 minutes or more over a 24-hour period.



Other Classmates

Any others who had interactions with someone with COVID-19 lasting a total of 15 minutes or more over a 24-hour period in confined areas, such as bathrooms or offices where distancing of 6 feet* is difficult.



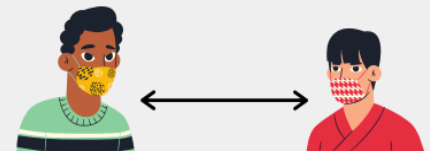
Entire Classrooms

If the contagious individual is a teacher and was frequently less than 6 feet* away from students while teaching, the entire class may need to be in quarantine.



Others

Any other person outside of school that had similar exposure to a contagious individual is considered a close contact.



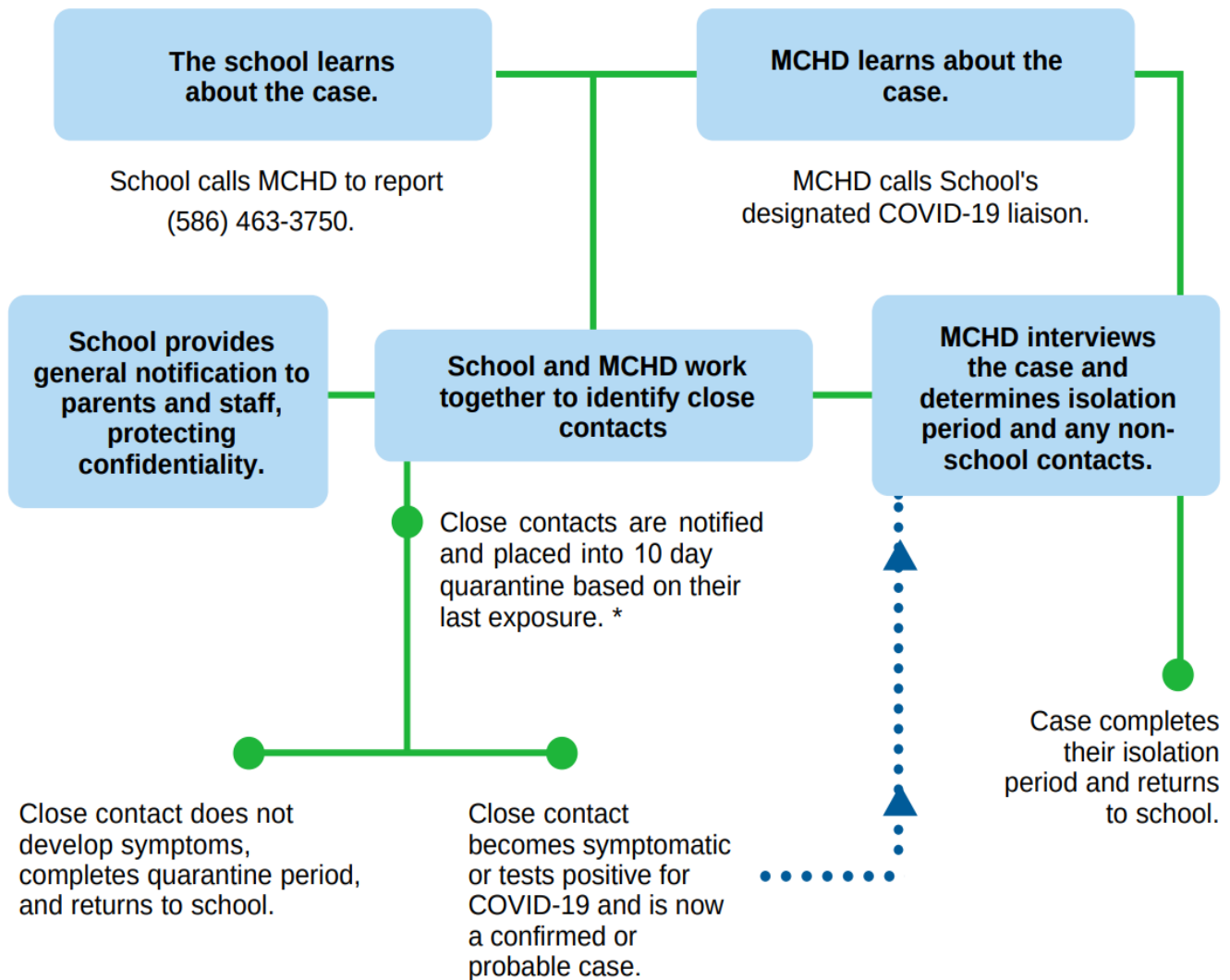
* MCHD may determine that distances beyond 6 feet, or less than a total of 15 minutes, can still result in high-risk exposures based on other considerations and circumstances for each case.

Process for a COVID-19 Case at School



What happens when someone at school gets COVID-19?

Student/Staff with confirmed or probable COVID-19.



* The quarantine period may be reduced to 7 days if the contact receives a negative viral (PCR or antigen) test performed at least 5 days after exposure. Quarantine is not necessary for contacts diagnosed with COVID-19 in the last 3 months or for contacts fully vaccinated against COVID-19.

Process for a COVID-19 Exposure at School



How to handle symptoms and household exposures?

1

Does student have symptoms of COVID-19?

Yes, symptoms:

Are they at higher risk of getting COVID-19*?

Yes, at higher risk:

The student is excluded from school until:

- 24 hours with no fever (without fever-reducing medication) **AND**
- Symptoms have improved **AND**
- 10 days since symptoms first appeared.

2

Are they a close contact of a person with confirmed or probable COVID-19?

Yes, close contact:

The student/staff person is excluded from school until 10 days past last known exposure.**

3

Are they a household member or close contact of a person with symptoms or a pending COVID-19 test?

Yes:

Household members, classmates, and other close contacts of a symptomatic but undiagnosed person, or a quarantined person may continue to attend school and should monitor for symptoms. They do not need to be excluded from school. If symptoms develop, they should call their medical provider to be tested for COVID-19. If the household member or contact tests positive, they should follow step 2, above.

This is a summary document that may not cover all scenarios. If you are concerned about a less common COVID-19 exposure situation at school, please contact MCHD at 586-463-3750 for guidance.

* Students at higher risk of developing COVID-19 are those who in the past 14 days, had close contact with a person who has tested positive for COVID-19.

**The quarantine period may be reduced to 7 days if the contact receives a negative viral (PCR or antigen) test performed at least 5 days after exposure. Quarantine is not necessary for contacts diagnosed with COVID-19 in the last 3 months or for contacts fully vaccinated against COVID-19.

COVID-19 Privacy and Contacts



What happens when someone at school gets COVID-19?

- 1** The school and MCHD learn about someone with COVID-19. Someone diagnosed with COVID-19 is a "case".

PRIVACY IS IMPORTANT

Only a select few at the school should know the identity of the person. They help MCHD figure out who are close contacts to the case. The person's identity is kept confidential to respect their privacy as well as following regulations of FERPA (for schools) and HIPAA (for the health department).

- 2** Close contacts are identified and notified.

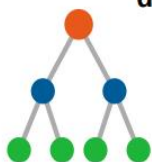


Who is a close contact? Typically it's someone who was within 6 feet (about 2 adult arms lengths) of an infected person for a total of 15 minutes or more over a 24-hour period.

A person with COVID-19 is considered contagious starting 2 days (48 hours) before they started having symptoms. If they are asymptomatic, or never have symptoms, they are considered contagious starting 2 days (48 hours) before their COVID-19 test was performed.

Close contacts are at risk of getting sick, and must be identified and be in quarantine. **Quarantine separates people who were exposed to a contagious disease to see if they become sick.** *

...but what about contacts to close contacts?



Since close contacts are not yet known to be infected, the contacts to those contacts do not need to be in quarantine and do not need to be identified or contacted.

Example:

Bob sits next to Fred in class. Fred gets sick with COVID-19. Bob needs to be quarantined, even though he is healthy at this time. Bob plays on the football team, and Fred does not. No one on the football team has been near Fred. Therefore, the football team does not need to be quarantined. Hopefully, Bob will not get sick and will be back to school and football in a couple of weeks.



* Quarantine is not necessary for contacts diagnosed with COVID-19 in the last 3 months or for contacts fully vaccinated against COVID-19.

