

Chippewa Valley Schools



Return to School Guidelines

FALL 2020

Inspiring and empowering learners to achieve a lifetime of success

Return to School Guidelines

2020-2021



Chippewa Valley Schools is looking forward to resuming instruction in the fall. Public health data will be analyzed to determine if students will attend in-person instruction five days a week or attend on an alternating day, or hybrid schedule. The district's primary goal is to keep students and staff safe by implementing appropriate safety measures and meeting the standards of the state, local health department and CDC.

The Chippewa Valley Schools' Board of Education will review the latest public health data and guidelines to determine the delivery of in-person instruction that is safest. A final decision will be made when the latest data and safety measures indicate a safe return to school. **An intermittent shift to remote learning can occur at any time if the district determines that the in-person learning environment is not safe for students and staff.**

- Chippewa Valley Schools is following the requirements and recommendations in the MI Safe Schools: Michigan's 2020-2021 Return to School Roadmap.
- Chippewa Valley Schools will continue to monitor the latest information from the state government, local health department and CDC to support healthy and safe procedures and school schedules.
- Updated information and announcements are located on the district website and social media platforms

No matter the learning scenario, Chippewa Valley Schools is committed to create an environment where students can learn, teachers can teach, staff can work, families have options and all stakeholders feel safe and supported.

We thank you for your continued support as we navigate our current reality and prepare for every scenario.





Return To School Roadmap

2020-2021

District Decision

For Students not Enrolled in CVVA

State Mandated

For Students not Enrolled in CVVA

Scenario 1

In-Person Learning

MI Safe Start Plan
Phases 4, 5 or 6

OR

Hybrid or Remote Learning

MI Safe Start Plan
Phases 4

STUDENT CHOICE #1

- In phase 4 of the MI Start Safe Plan, students will start in a remote learning model. We are prepared to switch this scenario to a hybrid model, where a reduced number of students attend school every other day and alternate Fridays, if the latest public health conditions indicate a rising safety concern and the Board of Education determines it necessary.
- During phase 4, CVS will implement the required safety protocols and many of the highly recommended protocols that are listed in the Return to School Roadmap.
- In phases 5 and 6, students will attend classes daily with required safety protocols and measures to reduce the risk of community spread.



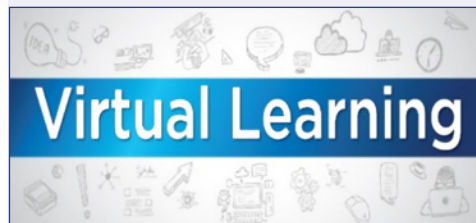
Scenario 1 details have been carefully created to quickly adjust to virtual learning, if needed.

Scenario 2

Virtual Learning

MI Safe Start Plan
Phases 1,2 or 3

In phases 1-3, students will participate in a newly designed remote learning opportunity. This is different than the Chippewa Valley Virtual Academy (CVVA) and the mandated remote learning of the spring. This scenario will reflect the latest Executive Order and include students that are not enrolled in the CVVA.



Chippewa Valley Virtual Academy (CVVA)

STUDENT CHOICE #2

If the above-mentioned learning scenarios are not the best fit for a student or family, Chippewa Valley Schools will offer a completely online learning environment

- This learning scenario does not change, regardless of the phases of the MI Safe Start Plan
- Chippewa Valley teachers instruct the courses using Chippewa Valley Curriculum
- Daily scheduled online instruction
- Supports available for students with accommodations and IEPs
- Students must commit to a trimester, semester, or entire school year. Students may petition to return at the trimester or semester time, but there are no guarantees that space will be available for them in the traditional schedule. Students are guaranteed a return to their home school for the 2021-22 school year.

Factors to Consider when Deciding on the Best Option for the 2020-2021 School Year

1. Your child's and family's current health and/or risk factors related to COVID-19
2. Your child's learning style
3. Your family needs
4. If your child has a 504 or IEP, and if a virtual approach is best for them



Learning Scenarios for the Various Phases of the MI Safe Start Plan

2020-2021

Michigan's Return to School Roadmap, Phase 1, 2 and 3

- Students will receive instruction remotely
- This will have no effect on the Chippewa Valley Virtual Academy
- Remote learning includes:
 - Schoology platform
 - Combination of recorded and live instruction
 - Daily attendance
 - Consistent grading measures and accountability
 - Commitment to teaching and learning
 - Teaching and support staff availability to assist students
- Technology:
 - District laptops will be available to checkout for families without devices. To the best of our ability, CVS will provide a laptop for each school-aged child in the household.
 - Internet hot spots will be available to check out for families without internet. One hotspot will be provided per household.

Michigan's Return to School Roadmap, Phase 4

- Phase 4 instruction permits in-person instruction with required safety protocols
- Strongly recommended and recommended protocols that are feasible will be implemented as well

Michigan's Return to School Roadmap, Phases 5 and 6

- Students who are not enrolled in the Chippewa Valley Virtual Academy, will attend in-person school five days a week
- Safety protocols will be in place to reduce the risk of community spread

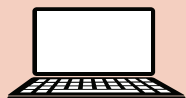
Safety Protocols for Phases 4, 5 and 6

Several safety protocols will be in place to support health and safety. These include:

- Personal protective equipment
- Proper hygiene
- Student movement and access
- Screening protocols
- Athletics
- Food Service
- Cleaning expectations

CHIPPEWA VALLEY SCHOOLS RETURN TO SCHOOL ROADMAP

PHASE 1 - 3



CVS will offer

**REMOTE
LEARNING**

PHASE 4



CVS will offer
either

HYBRID INSTRUCTION

(A combination of Remote and
In-person Instruction)

OR

IN-PERSON INSTRUCTION

with required safety protocols

PHASE 5



CVS will offer

**IN-PERSON
INSTRUCTION**

with minimal
safety protocols

PHASE 6



CVS will offer

**IN-PERSON
INSTRUCTION**

The Chippewa Valley Virtual Academy is available for families not ready to return to in-person learning in each phase.

NOTE: In the event of increased risk of the spread of COVID-19 in our community, schools may return to a 100% remote learning model during any phase.



CHIPPEWA VALLEY SCHOOLS

Sample Learning Schedules

2020-2021

Elementary (K-5) Sample School Day

Approximate Times	Elementary (K-5) Sample School Day
30 minutes	Social Emotional Learning
75 minutes	ELA/Reading <ul style="list-style-type: none">Including large and small group instruction
15 minutes	Brain Break
75 minutes	Math <ul style="list-style-type: none">Including large and small group instruction
30 minutes	Lunch*
30 minutes	MTSS / Student Support
60 minutes	Special (Art, Music, PE, or Science for 10 weeks)
30 minutes	Recess
60 minutes	Science & Social Studies <ul style="list-style-type: none">Including large and small group instruction

Official School Day Times

Early Start School Times
8:30 a.m. - 3:14 p.m.

Late Start School Times.
9:00 a.m. - 3:44 p.m.

This is a sample schedule and instructional times will vary per grade level in each building.

Secondary (6-12) Sample School Day

Middle School	
7:58 a.m.	1 st Period
9:02 a.m.	2 nd Period
10:06 a.m.	3 rd Period
11:10 a.m.	4 th Period
12:09 p.m.	Lunch*
12:39 p.m.	5 th Period
1:43 p.m.	6 th Period

High School	
7:15 a.m.	1 st Period
8:20 a.m.	2 nd Period
9:25 a.m.	3 rd Period
10:30 a.m.	4 th Period
11:36 a.m.	Lunch*
12:07 p.m.	5 th Period
1:12 p.m.	6 th Period

Remote learning and CVVA student schedules will reflect a traditional six-hour schedule for students. The daily routine will consist of accessing a combination of live and recorded instruction, traditional assignments, assessments, and support from teachers - all through the Schoology platform. The courses will be designed to teach our current curricular standards. Students should plan to commit the same number of hours as they would in a traditional school day.

*Lunch periods may vary.



Learning Plans and Schedules

2020-2021

Hybrid Instructional Plan

- During phase 4 of the MI Safe Start, the district will monitor local health data and determine if the hybrid learning plan is best
- In-class instruction focused on key concepts and skills
- At home learning to reinforce in-school instruction
- Staff will provide instruction to fill in unfinished/forgone learning and move instruction forward
- Traditional grading
- Social-emotional support
- Small group support for students

Hybrid Instructional Schedule

- Students will be divided into A-schedules and B-schedules.
- Group A students will attend in-person school on M and W, and Group B will attend on T and TH. Students will also attend in-person school every other Friday.
- The alternating schedule will allow us to reduce class sizes by an estimated half of what they would be typically, limiting exposure to students
- On alternating days, students will continue their education by completing assignments, utilizing resources provided by staff, and be able to reach out to their teachers if they have specific questions
- Staff will utilize class time differently than they have in the past to keep pace with our curriculum and focus on standards essential to a full year of growth for students
- A student's school day will mirror a traditional school day when they are at school, with additional safety protocols in place, as outlined in this document

Remote Instructional Plan

- Online education will take place when in-person instruction is not permitted by the state or when the district determines in-person instruction is impossible or unsafe
- Staff will provide instruction to support unfinished learning and move instruction forward
- Students will follow a reasonable school schedule
- Same content across all delivery modes
- Will be managed through Schoology
- Class meetings will utilize Microsoft Teams
- Flexible access for students and families
- Traditional grading
- Social-emotional support
- Small group support for students

Traditional Instructional Plan

- Students will receive in-person instruction while attending class each day
- Staff will provide instruction to support unfinished learning and move instruction forward
- Elementary students will remain in their class for most of the day
- Secondary students will rotate classes
- Health and safety protocols will be in place for students and staff





Health and Safety Procedures

2020-2021

Staff Requirements

- Understand signs and symptoms of COVID-19
- Complete a health screener before entering the building and stay home if sick or have signs of COVID-19
- To the best of one's ability, inform Human Resources of medical concerns
- Follow guidelines for appropriate use of personal protective equipment
- Always wear a facial covering, except during meals
- Maintain appropriate spacing in the teacher's lounge and workrooms
- Inform administration of any contact with a symptomatic person
- Exit the building one hour after dismissal to allow for cleaning protocols
- If additional time is needed in the building, administration must approve. The decision will be limited to school/district sponsored clubs.
- School sponsored clubs must meet state guidelines for group size
- Follow building safety protocols
- Maintain appropriate space between self and students while providing instruction
- Encourage students to maintain appropriate spacing
- Maintain appropriate space between self and other staff members, including classroom paraeducators
- Wear and make ID badges visible

Student Requirements

- Understand signs and symptoms of COVID-19
- Prior to the school day, conduct daily symptom check and stay home if sick or have signs or symptoms of COVID-19
- To the best of one's ability, share medical concerns with the building health aide or staff
- Follow the guidelines for appropriate use of personal protective equipment
- Use district provided hand sanitizer before entering the bus
- Wear facial coverings when using district busses
- Wear facial coverings in the hallways and other common areas of the building
- Always wear facial coverings if in grades K-12, except when eating
- Wear facial coverings during emergency drills
- Follow building protocols for entry and exit of the building.
- Arrive to school at the scheduled time. Do not congregate inside or outside the school before school begins.
- Exit the building within 15 minutes of the school day unless enrolled in a club
- Do not congregate in hallways and go directly from class to class
- (Grades 6-12) Carry and make ID badges available upon request

Health and Safety Procedures

2020-2021



Arrival and Dismissal Procedures

- Students and staff must wear a facial covering when entering and exiting the building
- Staggered arrival and dismissal procedures at each building will limit the formation of crowds. This may include the use of multiple doors for entry as well as exit.
- Students that are not using district transportation should arrive to school at the scheduled time
- Students and families are not permitted to congregate inside or outside the building before or after school
- Each school administration will communicate details regarding arrival and dismissal specific to the building
- Students will utilize assigned doors for entry and exit
- Students must exit the school building within 15 minutes of the end of the school day unless enrolled in an afterschool district sponsored club
- Hallways will be designated as one-way traffic when possible or divided as two-way traffic to ensure efficiency and appropriate spacing between students and staff

Assemblies

- Indoor assemblies will not be allowed if more than one classroom attends
- Virtual assemblies will be encouraged

Athletics

- CVS will comply with Michigan High School Athletic Association (MHSAA) guidelines
- Student athletes must sign a legal waiver to participate in organized sports' activities
- All sport teams will follow strict sport-specific protocols that follow the district expectations for athletics related to distancing, sanitization, and cleanliness
- Students, teachers, and staff must wash hands before and after every practice or game
- Facial coverings are required on busses
- No handshakes or fist bumps
- Teams and coaching staffs will communicate with the local health department for guidance in all situations regarding the health and safety of our players and coaches
- No large-scale indoor spectator events
- Large scale outdoor events will follow MHSAA guidelines for social distancing and number of spectators
- Indoor events will follow MHSAA guidelines for social distancing and number of spectators
- Spectators will be limited and must wear facial coverings and observe social distancing



Breakfast

- Students will be permitted to eat breakfast in the cafeteria during designated times if social distancing is possible



Health and Safety Procedures

2020-2021



Building Procedures and School Offices

- Physical distancing between employees
- Limited furniture to reduce items that need to be cleaned
- Hand sanitizer and facial coverings for students, staff, or approved visitors
- Require a completed health screener before entry is permitted to the building
- Maintain a detailed record of all visitors to the building
- Plexiglass installed around clerical desks
- Regular cleaning of office spaces
- Visitors will not be allowed in the building. Extenuating circumstances may be considered but will be limited. An approved visitor will enter the building from the main office and must complete a health screener before entry.
- Maintenance employees must follow the approved visitor protocols
- Virtual meetings will be scheduled for IEPs, 504s, parent teacher conferences and school events such as curriculum night
- Only students can enter the building for late arrivals, parents/guardians should accompany their child to the exterior door of the school
- Guests are limited. When necessary, guests are asked to use the main door and camera system to show identification and state a specific need. The office staff will limit entry into the school building when possible by using the exterior video and sound system to its fullest extent.

Building Safety

- When open, building doors for entry or exit of the building should be monitored by a staff member

Cafeterias and Lunch

- Building administrators will create schedules to give students and staff appropriate time to each lunch
- When available, schools will utilize additional building space and the cafeteria to accommodate lunch
- When the weather permits, students may eat outside if adult supervision is available
- Students will have assigned seats and elementary students will remain with their classroom peers during lunch
- Students will be spaced out as much as possible to support social distancing





Health and Safety Procedures

2020-2021

Classrooms

- Desks/tables will face the same direction when possible
- Within the given space, physical distancing will take place
- Excess furniture will be removed
- Soft touch surfaces that cannot be cleaned will be removed
- Cleaning products and hand sanitizer will be provided
- High touch areas such as desks will be cleaned between groups
- Students will be encouraged to use their own materials, rather than sharing
- If materials must be shared, they should be disinfected between each use
- Elementary specials' teachers will travel to classrooms, except for physical education
- Specials' schedules will be modified to avoid excessive rotation of students. A class will have the same special for ten weeks and then rotate to a different special for the next ten weeks, instead of rotating specials each day of the week
- Physical education classes will take place outside if weather permits



Cleaning Routines and Good Hygiene

- High touch surfaces will be cleaned every four hours
- Student desks/tables will be cleaned after each class or when a new class enters the space
- Shared materials will be cleaned between use
- Physical education equipment that is shared will be cleaned between each use
- School buildings will be thoroughly cleaned each night
- Drinking fountains will be closed in our school buildings
- Cafeteria tables will be cleaned and sanitized between lunch periods
- Playgrounds will undergo normal cleaning

Community Events and After School Groups

- No community events will be allowed in our buildings during phases 4 and 5
- Limited Chippewa Valley groups will have access to the school buildings after school

Computer Labs

- Computer labs or laptop carts will be used when available
- Devices will be cleaned after they are used

Cubbies/Lockers

- Lockers will not be used. Cubbies or student storage spaces at the elementary level will be considered if appropriate space exists and limited to one class in a space.
- Each school building will determine the best ways for students to travel with their belongings throughout the building

Health and Safety Procedures

2020-2021



District Provided Transportation

- Students and staff will be required to use hand sanitizer upon entering the school bus
- Staff and students in Pre-K through 12 must wear a facial covering
- Students will sit no more than two students per seat, siblings will be encouraged to sit together
- Busses will be cleaned before and after every route
- Windows will be opened when cleaning occurs
- Windows on buses will be open during transport if the weather permits
- Bus routes may experience time delays with the new protocols



Facial Coverings

- A facial covering is a cloth material that covers the nose and mouth. Facial coverings may be secured to the head or wrapped around the lower face. They can be made of a variety of materials, such as cotton or linen, and may be factory-made or made by hand. If a facial covering is not disposable, it should be washed daily.
- Facial coverings are required for all staff and students
- The district will make facial coverings available for staff and students that do not have one
- Face shields are not acceptable replacements for a facial covering or mask
- K-2 staff will be provided with facial coverings that have a clear window to assist students with various learning needs

Fieldtrips

- Fieldtrips will not be permitted
- Virtual fieldtrips will be encouraged

Hallways

- Hallways will be designated as one-way traffic when possible or divided as two-way traffic to ensure efficiency and appropriate spacing between students and staff
- Stairways will be assigned as ascending or descending when possible if there is a second stairway in a nearby location

Health Clinics and Protocols

- Clinics have a designated and separate space in each building
- Students in the space are monitored by the building health aide or office staff
- Safety equipment is available to accommodate a student or staff member that may experience COVID-19 like symptoms
- Regular cleaning of the clinic to minimize virus spread
- If a student or staff member is feeling ill, a facial covering must be worn until an evaluation is complete
- If a student or staff member experiences COVID-19 like symptoms, they will sit in an isolation room, a designated separate space, until they can be transported home or to a health care provider. This space will be monitored by the health aide.
- A student who is febrile (100.4 or greater) must sit in the isolation room and leave the building as soon as possible. The student cannot return to school until fever free for at least 24 hours without the need for fever reducing medication.
- Any student or staff member who either exhibits COVID-19 symptoms or has a temperature of 100.4 degrees Fahrenheit or higher while at school or any school activity should be sent home and follow the Macomb County Health Department guidelines for return to school or work.

Health and Safety Procedures

2020-2021



Health Clinics and Protocols (continued)

- Minor health needs will be handled in the classroom
- The clinic is reserved for medication administration, diabetes management and medical procedures such as tube feedings
- The office staff will support the distribution of meds and help to manage diabetic students when there is a need



Health Screening

- Staff will be required to complete a health screener before entry to the building
- Students/families will be asked to self-screen each day before school, using the Chippewa Valley Student Self-Screening Questions found in this document
- Staff and students are encouraged to stay home if feeling ill or have symptoms that are COVID-19 related
- Approved guests must also complete a health screener before entry to the building

Media Centers

- When visiting the school media center, students must wear a facial covering
- Students are permitted to check out books.
- Elementary media clerks will be encouraged to visit classrooms to read, rather than requiring students to leave the classroom

Music and Band Classes

- Students will sit in the same direction, facing forward
- Class may be held outdoors, when appropriate
- 6 x 6-foot social distancing should be applied indoors (9 x 6 for trombone players)
- Wind instruments will not be used in elementary classes
- Wind instruments in secondary classes will be equipped with bell covers
- Overlapping masks will be used in band classes
- In-class singing will be limited
- Rehearsal time will be limited to 30 minutes

Parent Teacher Conferences, Curriculum Night or Meetings

- Events will take place virtually
- Every effort will be made to accommodate virtual meetings to limit guests in the buildings

Recess/Playgrounds

- Students will wash their hands or use hand sanitizer before and after recess.
- Students can remove their facial coverings when outdoors for recess
- Recess times will be scheduled
- The playground and play spaces will be divided into sections and each classroom will have a designated area for play each day. The areas will be rotated to give students access to most of the play space over the course of a week.
- Playgrounds will be cleaned regularly





Health and Safety Procedures

2020-2021

Restrooms

- Community restrooms will be cleaned every four hours
- Restrooms will be monitored to prevent overcrowding
- Students will use the restroom when needed but a schedule may be created to limit the number of students in a community restroom at one time
- Good hygiene practices will be taught and reinforced
- Informational signs will be posted to encourage proper handwashing

School Aged Childcare (SACC)

- Only available for students on the days school is in session for the given student
- Available to students in grades K-5, before and after school
- Building health and safety protocols will be followed as well as licensing requirements by the State of Michigan. This includes the completion of a student health screener and a temperature check before entry.
- Students attending SACC will be required to wear facial coverings
- SACC staff members will wear facial coverings

Service Providers

- Service providers, including paraeducators and ancillary staff, will visit classrooms for small group support when possible

Shuttle Bus Between High Schools for Students

- Students will wear face coverings on the bus
- Students will apply hand sanitizer upon entering the school bus
- Students will sit in assigned seats and siblings will be encouraged to sit together
- As appropriate regarding weather, windows will be opened during transport
- The school bus seats, and touch points will be disinfected after each route
- Students will be dismissed by rows from bus

Sick Students/Staff or Suspected Cases of COVID-19

- Chippewa Valley Schools will follow the MI Safe Schools Roadmap requirement that states all schools, public and private, must cooperate with the local public health department if a confirmed case of COVID-19 is identified
- CVS will follow the Macomb County Health Department Guidelines when dealing with suspected cases of COVID-19 in school
- If a case is confirmed, the school will notify staff and families
- Quarantine and contact tracing requirements will be determined by the local health department
- The Macomb County Health Department will work with schools to determine a need for closure

Snacks

- Elementary students will be permitted to have snacks in the classroom
- Birthday or classroom treats will not be permitted
- Proper distancing and hygiene practices will be encouraged

Social Emotional Support

- Social emotional support will be available to all students
- School staff will work to implement appropriate supports to assist students and staff

Spacing

- Students, teachers, staff members and desks/tables will be spaced as far apart as possible and face the same direction



Health and Safety Procedures

2020-2021

Special Education

- Students' health plans and 504s will be reviewed for needed adjustments
- Students' IEP or IEP amendment meetings will be held in collaboration with parents to address the needs (or to incorporate contingency learning plans that transcend settings of various phases of Michigan's Return to School Roadmap) of the students in the various phases of Michigan's Return to School Roadmap and for those who apply to CVVA
- IEP meetings will be virtual unless a family requests an in-person meeting. In person meetings will require that all participants follow district protocols, are screened, wear facial coverings, and maintain appropriate distances.
- Staff will be provided with facial coverings that have a clear window to assist with students with various learning needs
- In addition to facial coverings, staff members may wear other PPE as necessary
- Resource Room and Teacher Consultant Students will follow building schedule for phases 4, 5, and 6
- Students will go to Resource Room, per IEP, for specialized instruction

Transportation

- Students will wear facial coverings on bus
- Students will apply hand sanitizer when boarding the bus
- Students will sit in assigned seats on bus. Siblings will be encouraged to sit together while on the bus
- As the weather permits, windows will be opened during transport
- The school bus seats, and touch points will be disinfected after each route
- Students will be dismissed by rows from bus

Career and Technical Education (CTE)

- CTE programs are preparing for in-person, hybrid, and virtual learning.
- Some CTE programs may not be appropriate for the CVVA due to the amount of hands-on skills and specialized equipment that are needed for instruction and learning
- CTE Internships – Should the Governor issue a stay-at-home order, senior students involved in paid internships will be subject to MDE requirements, which may prohibit working under a training agreement. Alternate learning assignments will be provided by the Internship Coordinator in that situation.

Early Childhood Special Education (ECSE) and Creative Learning Program (CLP)

- If the district adopts a remote learning plan during phase 4, the programs will adopt the same learning format
- In-person instruction will continue for phases 4, 5 and 6 as normally scheduled if the district implements a hybrid learning plan
- Within the given space, physical distancing will take place
- Items with soft touch surfaces that cannot be cleaned will be removed
- Cleaning products and hand sanitizer will be provided
- Extra safety precautions will be in place to ensure the safety and health of staff and students
- High touch areas such as desktops will be cleaned between instructional groups
- To the extent possible, service providers such as speech pathologists, occupational therapists and physical therapists will travel to the classroom
- Children over two will wear facial coverings in common areas and classrooms
- Staff, students, and parents/guardians will follow building safety protocols
- No fieldtrips will be scheduled, virtual trips will be encouraged
- Classroom volunteers or guests will not be permitted



CHIPPEWA VALLEY SCHOOLS

Special Programs

2020-2021

Great Start Readiness Program (GSRP)

- In-person instruction will continue for phases 4, 5 and 6 as normally scheduled. If local and/or state health data indicates a need to reevaluate the situation, changes may be implemented.
- In-person instruction will continue for phases 4, 5 and 6 as normally scheduled if the district implements a hybrid learning model
- Within the given space, physical distancing will take place
- Excess furniture will be removed
- Soft touch surfaces that cannot be cleaned will be removed
- Cleaning products and hand sanitizer will be provided
- Safety precautions will be in place to ensure the safety and health of staff and students
- High touch areas such as desks will be cleaned between groups
- To the extent possible, service providers such as speech pathologists, occupational therapists and physical therapists will travel to the classroom
- Children over two will wear facial coverings in common areas and classrooms
- Staff, students, and parents/guardians will follow buildings safety protocols
- No fieldtrips will be scheduled, virtual trips will be encouraged
- Classroom volunteers or guests will not be permitted

Little Turtle Childcare and Preschool

- In-person instruction will continue for phases 4, 5 and 6 as normally scheduled. If local and/or state health data indicates a need to reevaluate the situation, changes may be implemented.
- Within the given space, physical distancing will take place
- Excess furniture will be removed
- Soft touch surfaces that cannot be cleaned will be removed
- Cleaning products and hand sanitizer will be provided
- Safety precautions will be in place to ensure the safety and health of staff and students
- High touch areas such as desks will be cleaned between groups
- To the extent possible, service providers such as speech pathologists, occupational therapists and physical therapists will travel to the classroom
- Children four years and up will wear facial coverings in common areas
- Staff, students, and parents/guardians will follow building safety protocols
- No fieldtrips will be scheduled, virtual trips will be encouraged
- Classroom volunteers or guests will not be permitted

Work Experience

- Unpaid work experience opportunities will take place within the school/district setting
- Paid work experience will be subject to the MDE requirements which may prohibit working under a training agreement if the Governor issues a stay-at-home order. Alternate learning assignments will be provided by the transition coordinator.

Student Self-Screening Questions

2020-2021



The following screener has been created by the Macomb County Health Department and will be used by Chippewa Valley Schools. Parents/guardians are expected to screen their child(ren) **before leaving for school or sending them to school**. These symptoms may indicate a possible illness that may decrease your child's ability to learn and put them at risk for spreading illness to others.

Section 1: Symptom Questions

- ☐ Temperature 100.4 degrees Fahrenheit or higher when taken by mouth
- ☐ Sore throat
- ☐ New uncontrolled cough that causes difficulty breathing (for students with chronic allergic/asthmatic cough, a change in their cough from baseline)
- ☐ Diarrhea, vomiting, or abdominal pain
- ☐ New onset of severe headache, especially with a fever



If the answer is YES to any of the symptom questions, keep your child(ren) home from school.

Section 2: Close Contact/Potential Exposure Questions

In the past 14 days has your child(ren):

- ☐ Had close contact (within 6 feet of an infected person for at least 15 minutes) with a person with confirmed COVID-19:

OR

- ☐ Traveled to or lives in an area with a high level of transmission of COVID-19



If the answer is YES to any symptom question and YES to any close contact/potential exposure question, call the school as soon as possible to let them know the reason your child(ren) will not be there today. Call your healthcare provider right away. If you don't have one or cannot be seen, go to <http://www.mi.gov/coronavirustest> or call 2-1-1 to find a location to have your child(ren) tested for COVID-19.

Section 3: Symptom Guidance



If the answer is YES to any of the symptom questions, but NO to all close contact/potential exposure questions, your student may return to school when symptoms subside or improve.

Managing Communicable Diseases in Schools

- **Fever:** at least 24 hours have passed with no fever, without the use of fever-reducing medications
- **Sore throat:** improvement (if strep throat: do not return until at least 2 doses of antibiotic have been taken)
- **Cough/Shortness of breath:** improvement
- **Diarrhea, vomiting, abdominal pain:** no diarrhea or vomiting for 24 hours
- **Severe headache:** improvement



Understanding COVID Symptoms

Symptoms of Coronavirus (COVID-19)

Know the symptoms of COVID-19, which can include the following:



Symptoms can range from mild to severe illness, and appear 2-14 days after you are exposed to the virus that causes COVID-19.

Seek medical care immediately if someone has emergency warning signs of COVID-19.

- Trouble breathing
- Persistent pain or pressure in the chest
- New confusion
- Inability to wake or stay awake
- Bluish lips or face

This list is not all possible symptoms. Please call your healthcare provider for any other symptoms that are severe or concerning to you.



cdc.gov/coronavirus

316475-A 07/21/2020

How to Handle Symptoms

Appendix C

How to handle symptoms and household exposures for students



Student has symptom(s) (new/different/worse from baseline of any chronic illness):

- Temperature of 100.4 or signs of fever (chills/sweating)
- Sore throat
- Uncontrolled cough that causes difficulty breathing
- Diarrhea, vomiting, or abdominal pain
- Severe headache

Exclude student from school

Screen for close contact or potential exposure risk within last 14 days.

- Student had close contact with a person with confirmed COVID-19.
- Student traveled to or lives in an area with a high level of COVID-19 transmission

Yes

Refer to healthcare provider or COVID-19 testing location for possible testing.

Student **diagnosed** with COVID-19 OR **no diagnosis** is available.

Student has **negative** test results.

Student had close contact with confirmed COVID-19 within last 14 days.

Yes

No

No

Home Isolation until:

- At least 10 days since symptoms first appeared **and**
- At least 24 hours with no fever without fever-reducing medication **and**
- Symptoms have improved

Finish Quarantine

Student may return based on this guidance for their symptoms

- **Fever:** at least 24 hours have passed with no fever without the use of fever-reducing medications
- **Sore throat:** improvement (if strep throat: do not return until at least 2 doses of antibiotic have been taken)
- **Cough/Shortness of breath:** improvement
- **Diarrhea, vomiting, abdominal pain:** no diarrhea or vomiting for 24 hours
- **Severe headache:** improvement

Return to School Additional Resources

2020-2021



Macomb County Health Department

Responding to Cases of COVID-19 Among Students, Teachers and Staff



Health
Department

Possible COVID-19 Cases in Students

- Symptoms of possible COVID-19 in students include the following. These symptoms should be new or different/worse than baseline for any existing chronic illness. A student with any of these symptoms should also be questioned about a history of close contact/potential exposure to the COVID-19 virus.

Symptoms

- Temperature of 100.4 degrees Fahrenheit or higher when taken by mouth
- Sore throat
- New uncontrolled cough that causes difficulty breathing (for students with chronic allergic/asthmatic cough, a change in their cough from baseline).
- Diarrhea, vomiting or abdominal pain
- New onset of severe headache, especially with fever

Close Contact/Potential Exposure

In the past 14 days:

- Had close contact (within 6 ft for at least 15 minutes) with a person with confirmed COVID19;

OR

- Traveled to or lives in an area with a high level of community transmission of COVID-19.

- Students who exhibit any of the above symptoms but who have no close contact/potential exposure history should not go to school or any school activity. If at school or any school activity, they should be sent home. These students may return to school 24 hours after resolution of fever (if there was a fever) and improvement of symptoms.
- Students who exhibit any of the above symptoms and who have a close contact/potential exposure history should not go to school or any school activity. If at school or any school activity, they should be sent home. These students should be evaluated by a healthcare provider and tested for COVID -19 with a diagnostic test (nose/throat swab).
- If at school or any school activity, the student should be required to wear a face covering and wait in an isolation area away from teachers, staff and other students until they can be transported home or to a healthcare facility.

Return to School Additional Resources

2020-2021



- School administration should notify the Macomb County Health Department when a probable case of COVID-19 in a student has been identified in the school. A probable case of COVID-19 in a student is defined as a student with any of the above symptoms and a close contact/potential exposure history. The Macomb County Health Department will work with the school to determine if further action is necessary.

Possible COVID-19 Cases in Teachers or Staff Persons

- Symptoms of possible COVID-19 in teachers and staff persons include the following. These symptoms should be new or different/worse than baseline for any existing chronic illness.

Any one of the following:

- Cough
- Shortness of breath
- Difficulty breathing
- New loss of smell
- New loss of taste

_____ **OR** _____

Two or more of the following:

- Fever (measured or subjective)
 - Chills or rigors (shaking or exaggerated shivering)
 - Muscle aches without another explanation
 - Headache
 - Sore throat
 - Nausea or vomiting
 - Diarrhea
 - Fatigue
 - Congestion or runny nose
- Any teacher or staff person who exhibits COVID-19 symptoms as defined above or has a measured temperature of 100.4 degrees Fahrenheit or higher should not go to school or any school activity. If at school or any school activity, they should be sent home. These individuals should be evaluated by a healthcare provider and tested for COVID-19 with a diagnostic test (nose/throat swab).

Return to School Additional Resources

2020-2021



- If at school or any school activity, the individual should wear a face covering and wait in an isolation area away from teachers, staff and students until they leave the school building or are transported to a healthcare facility.
- School administration should notify the Macomb County Health Department when a possible case of COVID-19 has been identified in a teacher or staff person. The Macomb County Health Department will work with the school to determine if further action is necessary.

Confirmed COVID-19 Cases

- School administration must notify the Macomb County Health Department of any confirmed case of COVID-19 in a student, teacher or staff person.
- School administration should notify all staff and student families of any confirmed case of COVID -19 in a school maintaining the confidentiality of the case as required by state and federal laws. Families may be contacted by the Macomb County Health Department and the district nurse.
- School administration should work with the Macomb County Health Department to identify close contacts of the confirmed case of COVID-19.
- For elementary schools and other settings where a stable classroom cohort has been maintained, the close contacts may be all students and staff in the classroom.
- For middle schools/high schools and any setting where a stable classroom cohort has not been maintained, a close contact is someone who has been within 6 feet of the case for at least 15 minutes regardless of the use of a face covering.
- Close contacts should be notified and instructed to remain quarantined at home for 14 days after the last contact with the confirmed case. Families may be contacted by the Macomb County Health Department and the district nurse.
- The need to close a school for a period of time because of COVID-19 illness will be determined by the district superintendent on a case-by-case basis in consultation with the Macomb County Health Department.

Close Contacts to a Confirmed COVID-19 Case

- Any student, teacher or staff person who is a close contact to a confirmed COVID19 case (household or non-household) should be immediately sent home from school and remain quarantined at home for 14 days after the date of last exposure to the confirmed COVID-19 case (for non-household contact) or 14 days after the date the confirmed COVID-19 case completes their isolation period (for household contact).
- No actions are necessary for students, teachers or staff persons who do not have symptoms and who are contacts of a contact (persons who have not had direct contact with a confirmed case of COVID-19 but instead have had close contact with someone who has had direct contact with a confirmed case of COVID-19).
- Students, teachers or staff persons must remain in quarantine for the full 14-day quarantine period even if they test negative for COVID-19.

Return to School Additional Resources

2020-2021



- Students, teachers or staff persons who test positive for COVID-19 must be reported to the Macomb County Health Department and managed as a confirmed case of COVID-19.

Returning to School/Work

- Students, teachers and staff persons with symptoms who test positive for COVID19 may return to school/work if:
 - At least 10 days have passed since symptom onset and
 - At least 24 hours have passed since resolution of fever without the use of fever-reducing medications and
 - Other symptoms have improved
- Students, teachers and staff persons who never had symptoms but who test positive for COVID-19 may return to school/work if at least 10 days have passed since the date of their first positive COVID-19 test (provided no symptoms appeared during the 10-day period).
- Students, teachers and staff persons with symptoms (previously described) who test negative for COVID-19 may return to school/work 24 hours after resolution of fever (if there was a fever) and improvement of symptoms. The student, teacher or staff person should provide documentation of the negative COVID-19 test result.
- Students, teachers and staff persons with symptoms (previously described) who are not tested for COVID-19 may return to school/work 24 hours after resolution of fever (if there was a fever) and improvement of symptoms if they present a note from a healthcare provider that provides an alternative explanation for the symptoms. If a healthcare provider note is not available, the student, teacher or staff person may return to school/work if:
 - At least 10 days have passed since symptom onset and
 - At least 24 hours have passed since resolution of fever without the use of fever-reducing medications and
 - Other symptoms have improved
- Students, teachers and staff persons who are close contacts to a confirmed case of COVID -19 and who test positive may return to school/work as outlined above.
- Students, teachers and staff persons who are close contacts to a confirmed case of COVID-19 and who test negative (or who are not tested) may return to school/work 14 days after the last exposure (for non-household contact) or 14 days after the confirmed case has completed their isolation period (for household contacts).

DISCLAIMER: This information is subject to change based on the latest information on COVID-19.



Additional Resources

MI Safe Schools Return to School Roadmap

- Follow the instructions of the [MI SAFE SCHOOLS: Michigan's 2020-2021 Return to School Roadmap](#) for the current Macomb County reopening phase.

CDC Resources

[Class Rules](#)

[Cover Coughs and Sneezes](#)

[Did you Wash Your Hands?](#)

[Do it for Yourself and your Friends](#)

[Don't Feel Well? Stay Home When You Are Sick](#)

[Don't Let Your Germs Go for a Ride](#)

[Help Protect Yourself and Others from COVID-19](#)

[Keep Space Between You and Others](#)

[Please Wear a Cloth Face Covering](#)
[Available in multiple languages](#)

[Protect Yourself and Others from COVID-19](#)

[Slow the Spread of COVID-19](#)

[Stop the Spread](#)

[Stop the Spread of Germs](#)
[Available in multiple languages](#)

[Symptoms of Coronavirus \(COVID-19\)](#)

[Wear a Cloth Face Covering to Protect You and Your Friends](#)

[What Your Test Results Mean](#)

[VIDEO: How to Wear a Cloth Face Covering](#)

